

Chapter 1

Introduction to Comprehensive Child Development Service

- **Scope of Service of Comprehensive Child Development Service**
- **Overview of Services Provided by Related Organisations and Government Departments**
- **Referral and Reply System**



Chapter 1: Introduction to Comprehensive Child Development Service

In the 2005 Policy Address, the Government announced launching the Head Start Programme on Child Development, currently known as the Comprehensive Child Development Service (CCDS), which aims at early identification and provision of timely support to children and families with special needs.

The distinctive feature of this programme is its interdisciplinary and cross-sectorial collaboration among the Education Bureau (EDB), the Department of Health (DH), the Hospital Authority (HA) and the Social Welfare Department (SWD). Through fostering communication and collaboration among different providers of the existing educational, medical, and social services, this programme demonstrates a new service model.



The Maternal and Child Health Centres (MCHCs) of DH have long been providing services to young children and women in Hong Kong. Around 90 percent of babies born by local parents receive services at MCHCs. It is a good contact point for pregnant women, postpartum mothers and pre-primary children. Thus, MCHCs act as one of the platforms to link up educational (pre-primary institutions), medical (other services of the DH, specialties at the HA), and social services (Integrated Family Service Centres / Integrated Services Centres) in the community to provide assistance to children and families in need.

I. Scope of Service of Comprehensive Child Development Service

CCDS provides support to pregnant women, mothers, children and families in need. It consists of four main components to promptly identify and manage:

- I. at-risk pregnant women;
- II. mothers with postnatal depression;
- III. children and families with psychosocial needs; and
- IV. pre-primary children with physical, developmental, and behavioural problems.

II. Overview of Services Provided by Related Organisations and Government Departments

This kit introduces the organisations and government departments that are involved in **Component IV of CCDS (early identification and management of pre-primary children with physical, developmental and behavioural problems)**, in order to familiarise early childhood educators with the programme's operations and referral procedures.

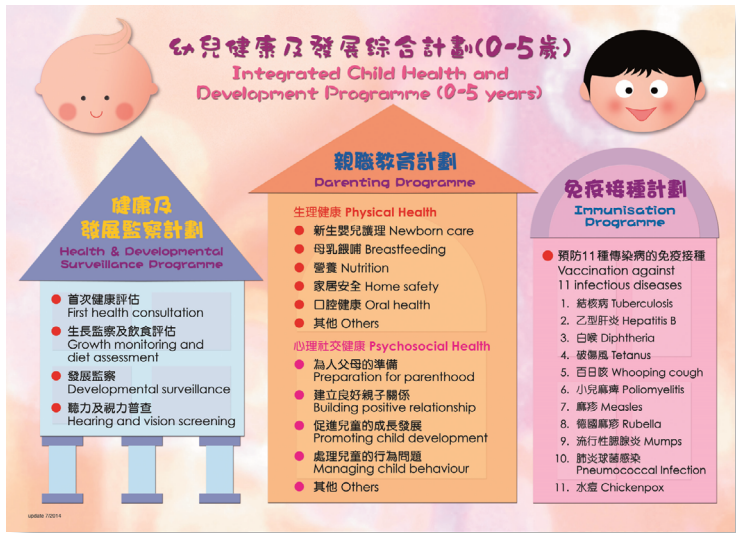
1. Family Health Service, Department of Health

The Family Health Service of Department of Health provides a comprehensive range of health promotion and disease prevention services for children from birth to 5 years and women at or below 64 years of age through 31 MCHCs and 3 Woman Health Centres (WHCs). These services include Child Health Service, Maternal Health Service, Family Planning Service, Cervical Screening Programme and Woman Health Service.



For further information on MCHC services, please refer to the Family Health Service website : www.fhs.gov.hk/english/

The Child Health Service of MCHCs is dedicated to promoting the holistic health of young children. It aims to enhance the physical, intellectual, behavioural and emotional development of children through the Immunisation Programme, the Health and Developmental Surveillance Programme and the Parenting Programme.



衛生署母嬰健康院
幼兒健康及發展綜合計劃(0-5歲)
Integrated Child Health and Development Programme (0-5 years)
Maternal and Child Health Centre
Department of Health

幼兒接受服務年齡 Age of child receiving service

產前	初生	一個月	兩個月	四個月	六個月	九個月	一歲	歲半	兩歲	三歲	四歲	五歲
AN	0 mth	1 mth	2 mth	4 mth	6 mth	9 mth	12 mth	18 mth	2 yr	3 yr	4 yr	5 yr
		☑	☑	☑	☑		☑	☑				
	☑											
		☑	☑	☑	☑		☑	☑			☑	
			(★)	(★)	★	(★)	★	★	(★)	(★)	(★)	(★)
		☑									☑	
	☑	☑	☑	☑	☑	☑	☑	☑	☑	☑	☑	☑

註冊 Keys: ☑ 免疫接種 Immunisation
 ☑ 首次健康評估 First Health Consultation
 ☑ 生長監察及飲食評估 Growth Monitoring and Diet Assessment
 ★ 發展監察 Developmental Surveillance
 ☑ 聽力篩查 (耳聲發射) Hearing Screening (Automated Otoacoustic Emission)
 ☑ 學前視力篩查 Preschool Vision Screening
 ☑ 親職教育 Parenting Education
 AN 產前 Antenatal
 (★) 如有需要 Indicated

i) Immunisation

- MCHCs provide immunisation to children up to the age of 5 according to the Hong Kong Childhood Immunisation Programme. (<http://s.fhs.gov.hk/1ucdq>)

ii) Health and Developmental Surveillance

- conducts routine monitoring of children’s growth and development to timely identify children with health and developmental problems.
- provides information on child development to enhance the knowledge and awareness of parents on their children’s development, and encourages close monitoring of child performance.
- provides vision screening for preschool children between the ages of four and five.

For children who are suspected to have significant developmental problems, MCHCs will refer them to the Child Assessment Service of DH or other specialty clinics for further diagnosis and follow-up.



iii) Parenting

- produces information leaflets and audiovisual resources to be distributed at MCHCs or accessed online at FHS website, as well as conducts talks or workshops regularly to better equip parents with knowledge and skills on child development and parenting.
- conducts Positive Parenting Programme (in Chinese only) for parents to learn about positive parent-child communication and positive parenting strategies.



For further information on the Parenting Programme conducted by Family Health Service, please refer to the website: <http://s.fhs.gov.hk/rrl3b>

2. Child Assessment Service, Department of Health

The Child Assessment Service (CAS) of DH operates 7 Child Assessment Centres (CACs) located in different regions of Hong Kong for children under 12 years of age with developmental, behavioural and emotional problems. Comprehensive specialist assessment and appropriate follow-up service will be arranged according to the developmental needs of the children.



For further information on CAS, please refer to Child Assessment Service website: www.dhcas.gov.hk/en/index.html

The multidisciplinary assessment team consists of:

- | | | |
|--------------------------|--------------------------|---------------------------|
| • Paediatricians | • Clinical Psychologists | • Speech Therapists |
| • Registered Nurses | • Optometrists | • Physiotherapists |
| • Medical Social Workers | • Audiologists | • Occupational Therapists |

The team is responsible to assess the physical, language, intellectual, behavioural, emotional, visual, auditory and other areas of development in children.

In general, CACs will invite parents to a first appointment after receiving the referral. The multidisciplinary team will conduct a pre-assessment case conference based on the information obtained to determine the assessment needs of the child. After completion of the assessment, the team will arrange for follow-up and rehabilitation services appropriate to the child's individual needs and the family's circumstances, e.g. medical services, counselling and support, training, special education, social welfare, review consultation, etc.

Assessment Service Flowchart



(Website of Child Assessment Service, DH: www.dhcas.gov.hk)

3. The Hospital Authority

HA manages 43 public hospitals and institutions, 49 Specialist Out-patient Clinics, and 73 General Out-patient Clinics, which provide medical and health services to all members of the community.

The HA provides various specialist out-patient services to children, including paediatrics/paediatric surgery, child psychiatry and speech therapy, etc. The professional staff of MCHC or CAS will refer children to these services for appropriate follow-up and treatment.

(Website of HA: www.ha.org.hk)



4. Integrated Family Service Centres / Integrated Services Centres

The Government is concerned about the service needs of families with young children and provides timely support to enhance the positive functioning of families through early identification and intervention. The 65 Integrated Family Service Centres (IFSCs) and the two Integrated Services Centres (ISCs) operated by the Social Welfare Department (SWD) or subvented Non-governmental organisations (NGOs) throughout the territory provide a spectrum of preventive, supportive and remedial welfare services for individuals and families in need. Services include family life education, parent-child activities, enquiry services, volunteer training, outreaching service, groups and programmes, intensive counselling, financial assistance and referral services, etc.





For further information on IFSCs / ISCs, please refer to the website of SWD :
www.swd.gov.hk/en/index/site_pubsvc/page_family/sub_listofserv/id_ifs/

5. Pilot Scheme on Social Work Service for Pre-primary Institutions

For early identification of and to provide assistance to pre-primary children and their families with welfare needs, the Government has allocated \$989 million from the Lotteries Fund to launch a three-year pilot scheme in the 2018/19 school year to provide social work services in phases for about 150 000 pre-primary children and their families in more than 700 subsidised/aided pre-primary institutions (PPIs) (including aided child care centres (CCCs), kindergartens (KGs) and KG-cum-CCCs) in Hong Kong.

The pilot scheme will be implemented in three phases. A total of 48 social work teams (will be more if involving half-teams), with not more than 16 teams by each phase, will be set up. Phase 1 and Phase 2 of the Pilot Scheme, serving a total of 246 and 239 eligible PPIs, have commenced operation in February 2019 and August 2019 respectively, whereas Phase 3 of the Pilot Scheme will commence operation in August 2020. All three phases will be ended by January 2022. An evaluation study to evaluate the mode of service operation, as well as the performance and output / outcomes of the service will be carried out during the implementation of the Pilot Scheme. It is expected that the study would shed light on the operation of the social work teams for assessment on the feasibility of regularisation of the service.

The operating NGOs will provide stationing social work service for their matched PPIs according to a pre-agreed service timetable. The key components of the services include –

- (a) to provide professional counselling and referral service for children and families;
- (b) to organise parenting education groups and talks;
- (c) to organise relevant thematic activities to consolidate family relationship;
- (d) to provide professional consultations for teaching staff and parents; and
- (e) to provide crisis management for children / family in need.

6. On-site Pre-school Rehabilitation Services

On-site Pre-school Rehabilitation Services (OPRS) would be provided to children with special needs aged under six whom are on the waiting list of the Central Referral System for Rehabilitation Services of the SWD. Through inter-disciplinary service teams coordinated by NGOs, the participating kindergartens or kindergarten-cum-child care centres are provided with on-site rehabilitation training and, subject to needs, training at centres equipped with rehabilitation facilities. The service teams also provide on-site professional consultation services and demonstration, and conduct talks / workshops / seminars, etc. for teachers and child care workers, with a view to enhancing their knowledge and skills in conducting training for children with special needs. In addition, the service teams conduct talks / workshops / seminars for parents / carers to facilitate better understanding and acceptance for their children with special needs. SWD regularised OPRS in October 2018.

After assessment by paediatricians, psychologists or other qualified professionals recognised by SWD, referrals can be made for the children by family caseworkers, medical social workers or social workers in any casework service settings to the Central Referral System for Rehabilitation Services of the SWD for service waitlisting. Please refer to the following link of SWD website for details:
www.swd.gov.hk/oprs/index_en.htm

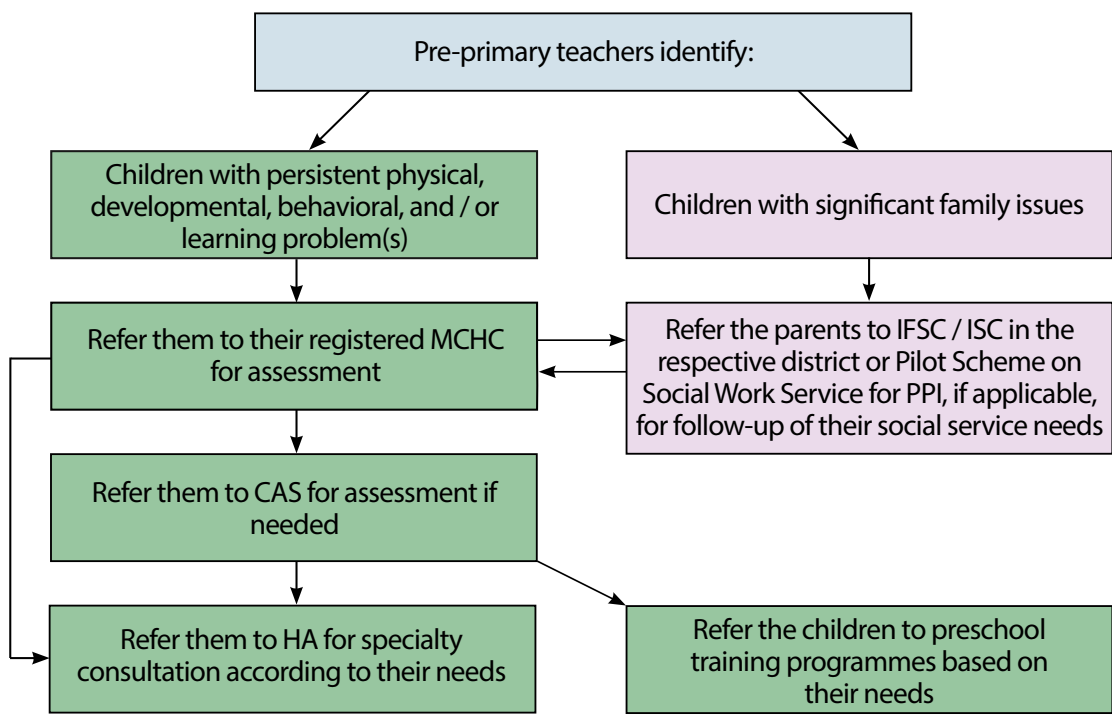
7. Kindergartens / Child Care Centres

Kindergartens and child care centres are major points of contact with young children. There are currently over 1030 kindergartens and child care centres in Hong Kong. According to the 2016 population by-census, about 90 percent of children aged three to five attend kindergartens or child care centres. Therefore, kindergartens and child care centres play a crucial role in the delivery of CCDS services for preschool children.



III. Referral and Reply System

Under the CCDS, a referral and reply system has been developed to enhance the close collaboration with kindergartens / child care centres, MCHCs, IFSCs / ISCs and social work service for PPIs. If the pre-primary teachers identify any physical, developmental, behavioural or family concerns in children, they may first explore the areas of concern, apply the basic intervention skills or adjust the curriculum accordingly. If the problem persists, teachers can refer the children directly to their registered MCHC, IFSC / ISC or social work service for PPI in the respective district for assessment or follow-up:



1. Referral Form

A “**CCDS Preschool Referral and Reply Form- Referral for MCHC Service**” (see Appendix 1) is designed to facilitate teachers from pre-primary institutions in utilising this referral system. Teachers need to fill out the following information on the form:

- Personal particulars of child
- Contact information of parent(s)
- Brief description of developmental observation on the child
- Main reason(s) for referral
- Information of the referrer and the person-in-charge of the pre-primary institution

After asking the parent(s) to **sign the consent**, teachers can fax the form to the child's registered MCHC. The referral forms (with fax numbers) for each corresponding MCHC can be downloaded from the webpage : The Education Bureau main page > Education System and Policy > Kindergarten Education > About Kindergarten Education > Comprehensive Child Development Service (0-5 years):

(www.edb.gov.hk/en/edu-system/preprimary-kindergarten/comprehensive-child-development-service/index.html#Form)



Comprehensive Child Development Service

- [Background](#)
- [Referral Flowchart](#)
- [Roles of Teachers](#)
- [Supports for Pre-primary Institutions](#)
- [Referral Forms for MCHC Service](#)
- [Reference: Pre-primary Children Development and Behaviour Management - Teacher Resource Kit](#)

Background

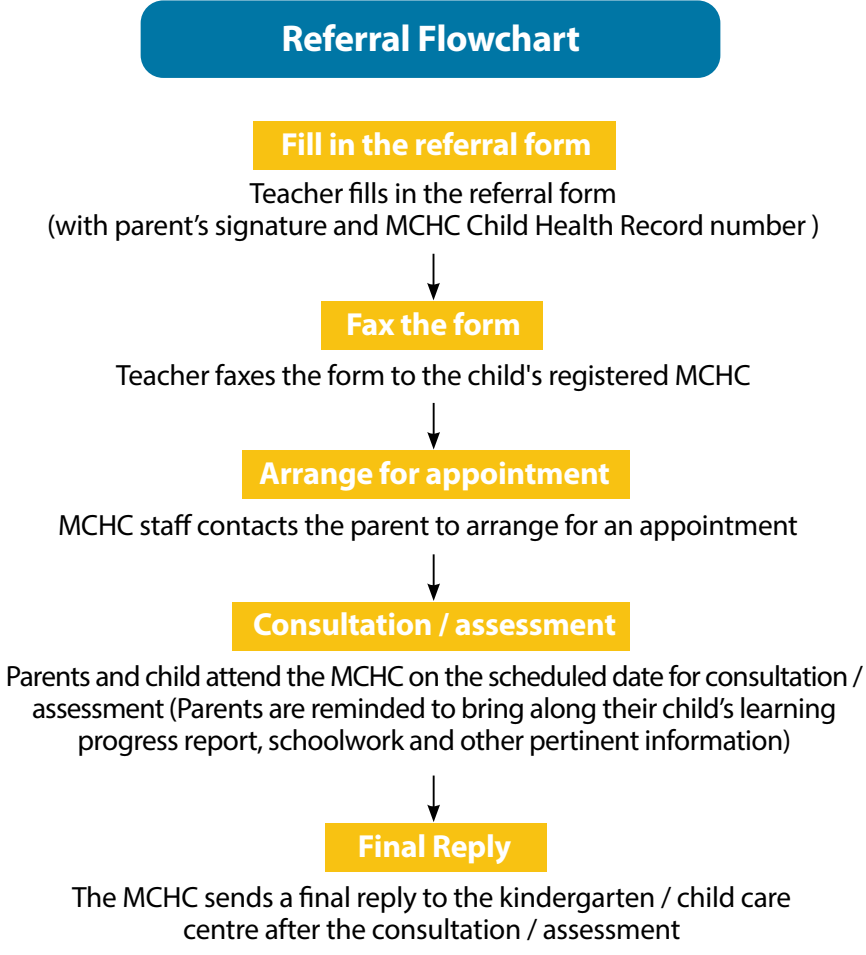
In the 2005 Policy Address, the Government announced launching the Head Start Programme on Child Development, currently known as the Comprehensive Child Development Service (CCDS), which aims at early identification and provision of timely support to children and families with special needs.

The distinctive feature of this programme is its interdisciplinary and cross-sectorial collaboration among the Education Bureau (EDB), the Department of Health (DH), the Hospital Authority (HA), and the Social Welfare Department (SWD). Through fostering communication and collaboration among different providers of the existing educational, medical, and social services, this programme demonstrates a new service model.

Under the CCDS, a referral and reply system has been developed to enhance the close collaboration with kindergartens/child-care-centres (KGs), Maternal and Child Health Centre (MCHCs) and Integrated Family Service Centres (IFSCs)/Integrated Services Centres (ISCs). If KG teachers detect any physical, developmental, behavioural or family issues with children, they can refer them directly to the MCHC or IFSC/ISC in the respective district for assessment.

2. Referral Flowchart

Upon receiving a referral, MCHC staff would contact the parent and arrange an appointment for consultation / assessment.



MCHC encourages parents to bring along their child's learning progress report, schoolwork and other pertinent information for reference when they attend the appointment. The doctor will ask the parents information on the child's development and growth, and also observe the child's behaviour. After the interview, the doctor will explain the child's condition to the parents, give preliminary recommendations, and refer the child to CAS of DH or related services of HA for further assessment and follow-up if indicated. The MCHC will also send a **final reply** to the kindergarten / child care centre (see Appendix 2).

Updated July 2020